

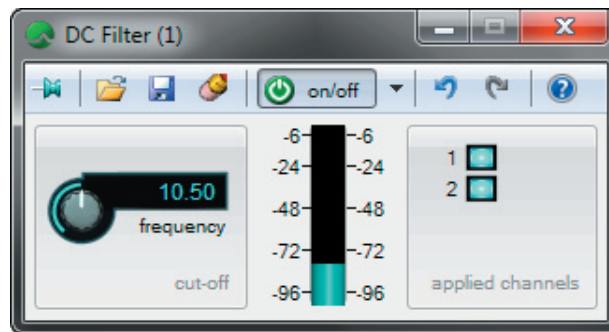


Core Facilities... (2)

The DC Filter

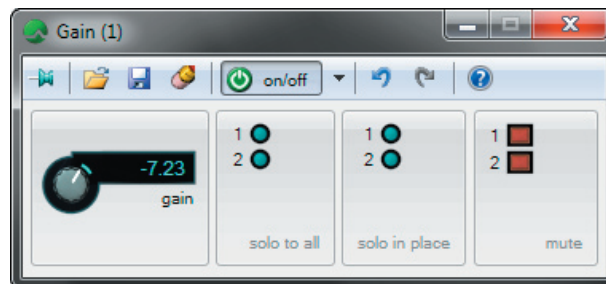
The DC Filter offers a roll-off of 12dB/octave at any user-defined frequency in the range 1Hz to 20Hz and, because removing DC offsets improves the signal modelling used elsewhere in CEDAR Cambridge, it is invaluable when used before restoration modules such as Declicke-2, Vintage Decrackle, Auto Dehiss, NR-4 and NR-5. It also increases signal headroom, and allows you to apply higher gains to output signals if desired.

Users may place the DC Filter anywhere in the signal chain, and can determine which channels are affected by it. A convenient display indicates the magnitude of any DC offset identified and (if desired) removed by the system.



Gain

CEDAR Cambridge provides a dedicated Gain module that allows you to apply gain independently to each channel. You can use one or more instances as an input gain control, as an output 'makeup' gain, or you can place it at any other point(s) you desire in the processing chain. Each instance allows you to mute and 'solo in place' any track(s) that you wish, or to solo a single track to 'all'.



Making CEDAR Cambridge the world's most versatile audio processor