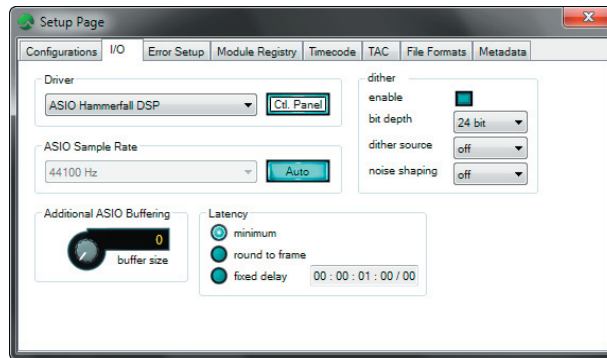




## Core Facilities... (1)

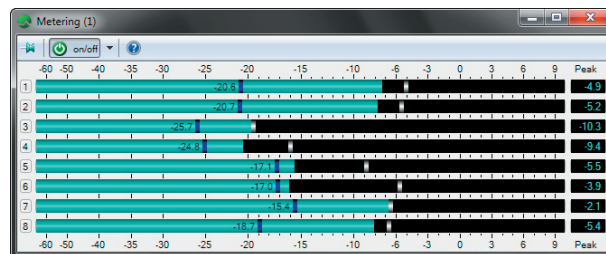
# Wordlength, Dither and Noise Shaping

The Dither configuration provides digital audio formatting controls, with options that allow you to select the most suitable wordlength and dither for each piece of audio. Alongside these, noise shaping allows you to move the noise introduced by quantisation to less obtrusive (i.e. higher frequency) areas of the audio spectrum. CEDAR Cambridge provides five wordlength options, four dither sources, and five noise shaping options.



# Multi-channel Metering

The CEDAR Cambridge Metering module provides simultaneous amplitude metering of all channels selected in the Channel Selector, so you can monitor levels on all eight channels at any stage of the processing chain. It provides four items of information for each channel: RMS Power, Peak Amplitude, Peak Hold with a hold time of one second, and Peak Hold since the most recent reset.



The CEDAR Cambridge Metering module is designed with reference to AES17, BS6840: Part 18: 1996 and IEC-60268-18.

**Making CEDAR Cambridge the complete audio processing system**